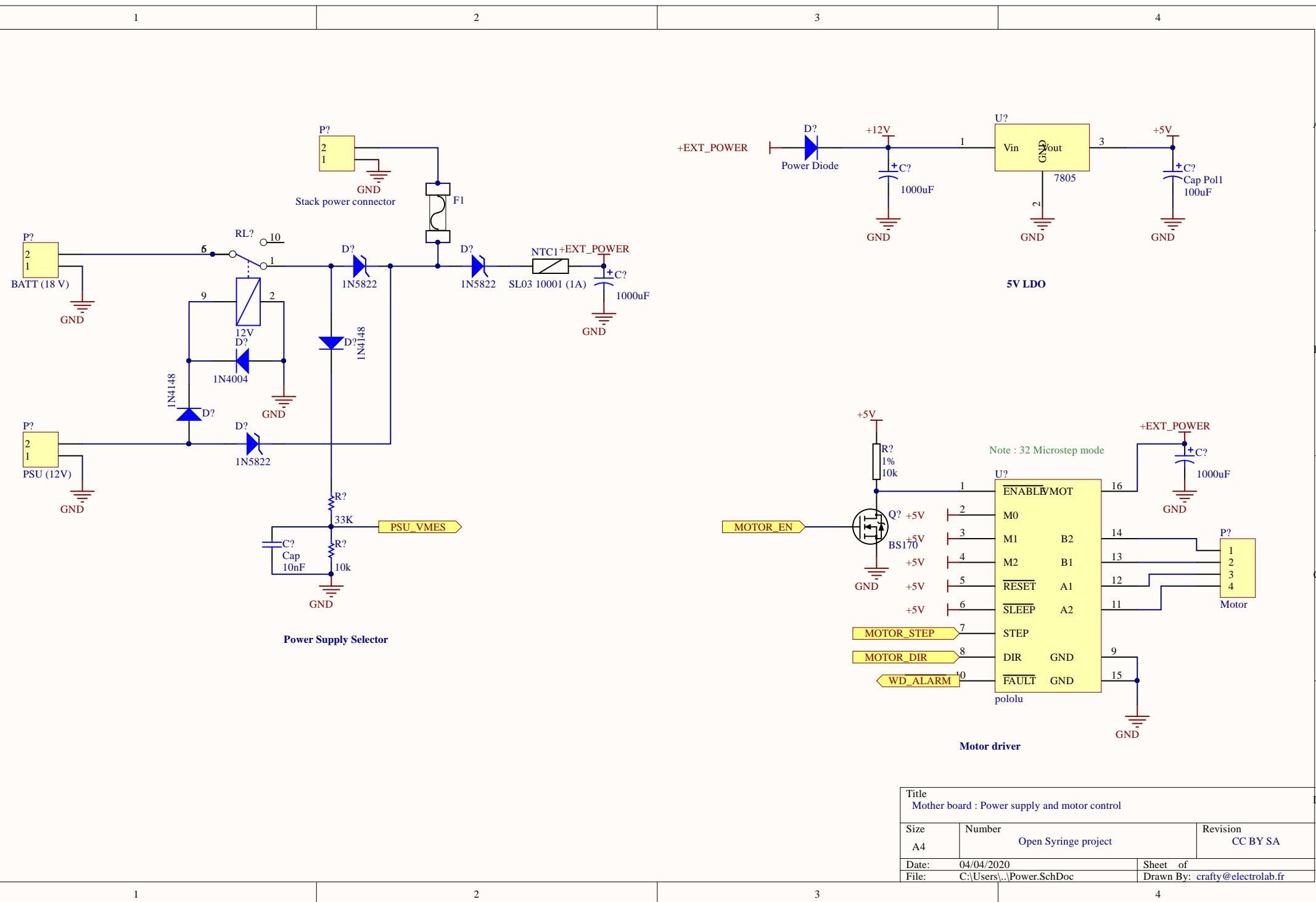
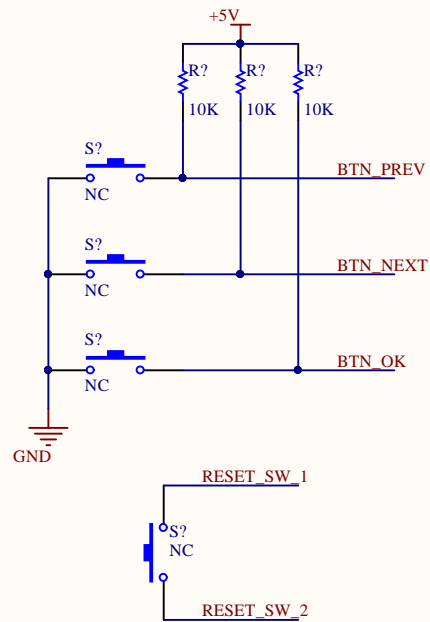


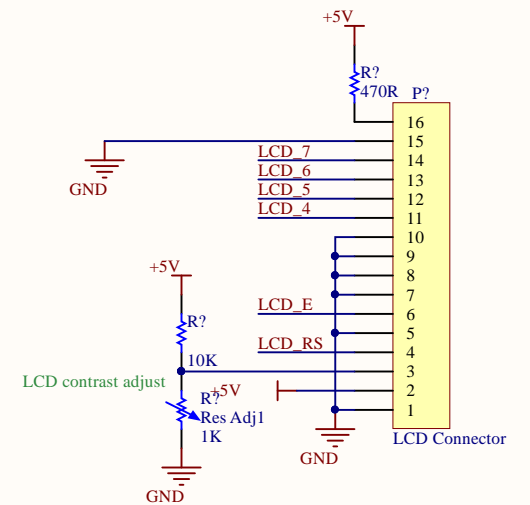
Title Mother board : CPU, Connections to UI and syringe arm, Buzzer		
Size A4	Number Open Syringe project	Revision CC BY SA
Date: 04/04/2020	Sheet of	
File: C:\Users\...\CPU.SchDoc	Drawn By: crafty@electrolab.fr	



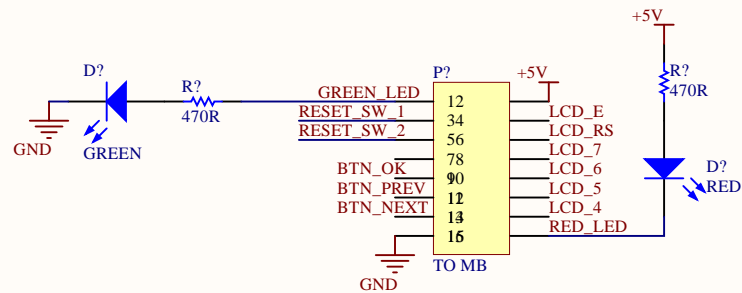
Title Mother board : Power supply and motor control			
Size A4	Number Open Syringe project	Revision CC BY SA	
Date:	04/04/2020	Sheet of	
File:	C:\Users\...\Power.SchDoc	Drawn By: crafty@electrolab.fr	



Push Buttons

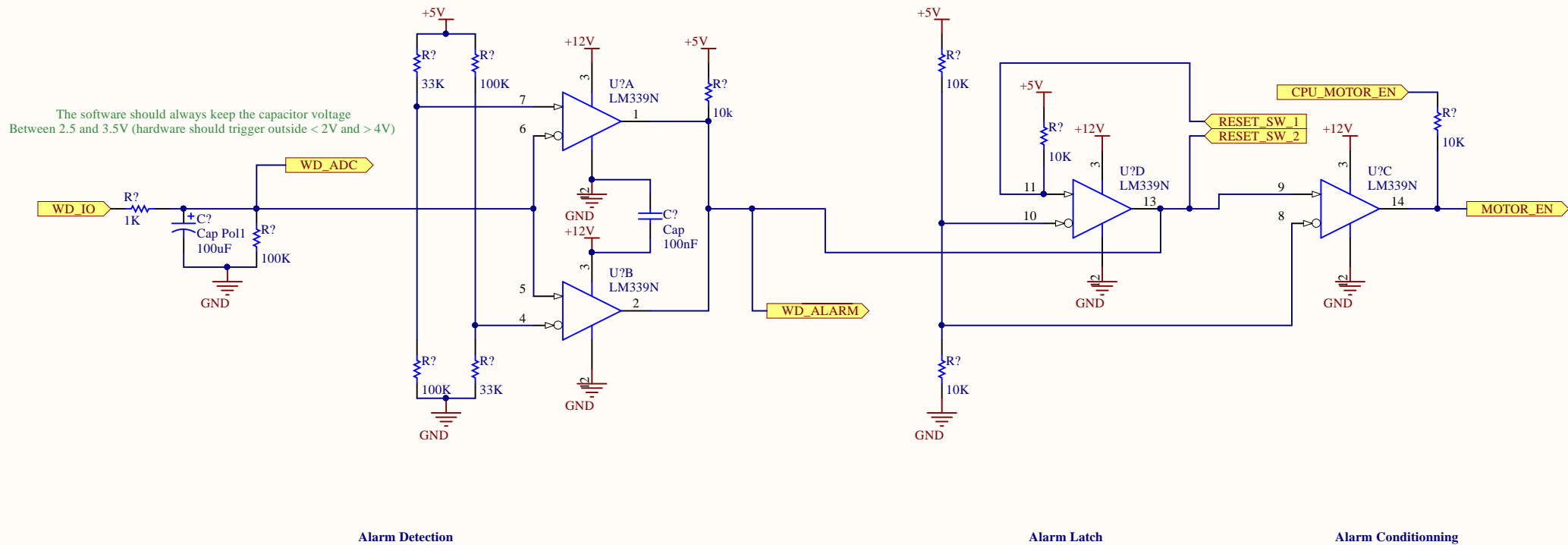


LCD Screen



Mother board connector

Title UI Board		
Size A4	Number Open Syringe project	Revision CC BY SA
Date: 04/04/2020	Sheet of	
File: C:\Users\...\UI_board.SchDoc	Drawn By: crafty@electrolab.fr	



The software should always keep the capacitor voltage Between 2.5 and 3.5V (hardware should trigger outside < 2V and > 4V)

Alarm Detection

Alarm Latch

Alarm Conditioning

Title Mother board : Hardware Watchdog		
Size A4	Number Open Syringe project	Revision CC BY SA
Date: 04/04/2020	Sheet of	
File: C:\Users\...\Watchdog.SchDoc	Drawn By: crafty@electrolab.fr	